A decorative header featuring several white, paper-cut style clouds of various sizes and shapes, scattered across a light grey background.

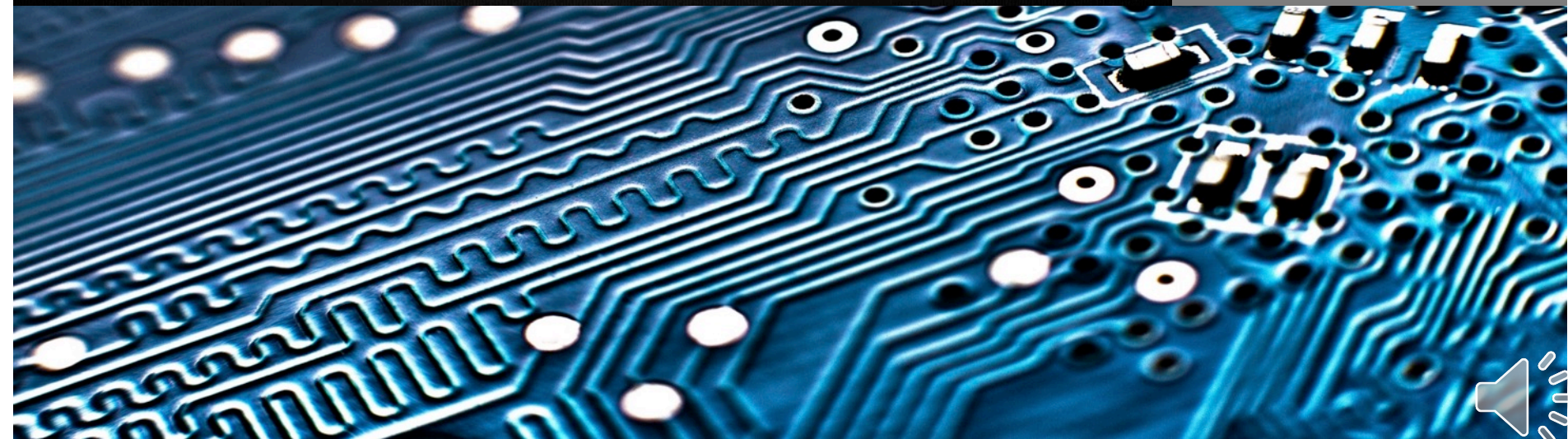
The logo of the University System of Georgia, featuring a stylized building with columns inside a circular border with the text "BOARD OF REGENTS OF THE UNIVERSITY SYSTEM OF GEORGIA".

**UNIVERSITY SYSTEM OF GEORGIA**  
Information Technology Services

# Financial Aid Release Review – Aid Year 1819

The GeorgiaBEST logo, which includes a blue banner with a white outline of the state of Georgia. To the right of the banner, the text reads "UNIVERSITY SYSTEM OF GEORGIA INFORMATION TECHNOLOGY SERVICES GeorgiaBEST STUDENTS • INTEGRATIONS • FACULTY TECHNOLOGISTS • ADMINISTRATION".

UNIVERSITY SYSTEM OF GEORGIA  
INFORMATION TECHNOLOGY SERVICES  
**GeorgiaBEST**  
STUDENTS • INTEGRATIONS • FACULTY  
TECHNOLOGISTS • ADMINISTRATION



# Financial Aid Release – Aid Year 1819

## Timeframe

### Financial Aid Data Collection

#### Key Dates

- October 8 , 2019 - Open
- November 4, 2019 – Certification and Due Date

# Items Included in Release

- New Data Elements
- New Validation Rules
- Updated Data Element
- Updated Validation
- New Reports
- Updated Reports
- Enhancements to the Financial Aid Data Element Dictionary(DED)

# New Data Elements

## New Data Elements

- FAFSA Application Receipt Date (FNA017)
- NSLDS Pell Lifetime Eligibility Used (FNA018)
- NSLDS Pell Lifetime Limit Flag (FNA019)
- Subsidized Usage Limit Applies Flag (FNA020)
- Subsidized Usage Period (FNA021)
- Undergraduate Subsidized Loan Limit Flag (FNA022)
- Undergraduate Combo Loan Limit Flag (FNA023)
- Graduate Subsidized Loan Limit Flag (FNA024)
- Graduate Combined Loan Limit Flag (FNA025)

# New Data Elements

## New Data Elements (continued)

- Marital Status (FNA026)
- Supported Children Flag (FNA027)
- Other Dependents Flag (FNA028)
- Parent Medicaid or Supplemental Security Income Receipt (FNA029)
- Parent Supplemental Nutrition Assistance Program (SNAP) Receipt (FNA030)
- Parent Free or Reduced Price School Lunch Receipt (FNA031)
- Parent Temporary Assistance for Needy Families (TANF) Receipt (FNA032)

# New Data Elements

## New Data Elements (continued)

- Parent Special Supplemental Nutrition Program for Women, Infants, and Children (WIC) Receipt (FNA033)
- Student Medicaid or Supplemental Security Income Receipt (FNA034)
- Student Supplemental Nutrition Assistance Program (SNAP) Receipt (FNA035)
- Student Free or Reduced Price School Lunch Receipt (FNA036)
- Student Temporary Assistance for Needy Families (TANF) Receipt (FNA037)
- Student Special Supplemental Nutrition Program for Women, Infants, and Children (WIC) Receipt (FNA038)



# New Data Elements

## New Data Elements (continued)

- Cost of Attendance (FNA039)
- Budget Type Code (FNA040)
- Budget Component Code (FNA041)
- Budget Component Description (FNA042)
- Budget Component Amount (FNA043)

# New Validation Rules

## New Validation Rules

- VFNA044 - If student has EFC, then FAFSA Application Receipt Date cannot be null.
- VFNA045 - If student has EFC, then NSLDS Pell Lifetime Eligibility Used cannot be null.
- VFNA046 - If populated, then Pell Lifetime Limit Flag must be C, E, H, or N.
- VFNA047 - If student has EFC, then Subsidized Usage Limit Applies Flag cannot be null.
- VFNA048 - Subsidized Usage Limit Applies Flag must be Y or N.



# New Validation Rules

## New Validation Rules (continued)

- VFNA049 - If student has EFC, then Subsidized Usage Period cannot be null.
- VFNA050 - If populated, then Undergraduate Subsidized Loan Limit Flag must be C, E, N, or R.
- VFNA051 - If populated, then Undergraduate Combo Loan Limit Flag must be C, E, N, or R.
- VFNA052 - If populated, then Graduate Subsidized Loan Limit Flag must be C, E, N, or R.
- VFNA053 - If populated, Graduate Combined Loan Limit Flag must be C, E, N, or R.



# New Validation Rules

## New Validation Rules (continued)

- VFNA054 - If student has EFC, then Marital Status cannot be null.
- VFNA055 - Supported Children Flag must be Y or N.
- VFNA056 - Other Dependents Flag must be Y or N.
- VFNA058 - Parent Medicaid or Supplemental Security Income Receipt must be Y or N.
- VFNA060 - Parent Supplemental Nutrition Assistance Program (SNAP) Receipt must be Y or N.
- VFNA062 - Parent Free or Reduced Price School Lunch Receipt must be Y or N.

# New Validation Rules

## New Validation Rules (continued)

- VFNA064 - Parent Temporary Assistance for Needy Families (TANF) Receipt must be Y or N.
- VFNA066 - Parent Special Supplemental Nutrition Program for Women, Infants, and Children (WIC) Receipt must be Y or N.
- VFNA067 - Student Medicaid or Supplemental Security Income Receipt must be Y or N.
- VFNA068 - Student Supplemental Nutrition Assistance Program (SNAP) Receipt must be Y or N.

# New Validation Rules

## New Validation Rules (continued)

- VFNA069 - Student Free or Reduced Price School Lunch Receipt must be Y or N.
- VFNA070 - Student Temporary Assistance for Needy Families (TANF) Receipt must be Y or N.
- VFNA071 - Student Special Supplemental Nutrition Program for Women, Infants, and Children (WIC) Receipt must be Y or N.

# New Validation Rules

## New Validation Rules (continued)

- VSID044 - There must be at least one student per institution with a DEF Fund Code.
- VSID045 - There must be at least one student per institution with a DET Fund Code.
- VSID046 - There must be at least one student per institution with an ATHLD or ATHLU Fund Code.
- VSID047 - There must be at least one student per institution with a DEBD or DEBU Fund Code.
- VSID048 - There must be at least one student per institution with an INSCHD or INSCHU Fund Code.
- VSID049 - There must be at least one student per institution with a LOAND or LOANU Fund Code.

# New Validation Rules

## New Validation Rules (continued)

- VSID050 - There must be at least one student per institution with an OTHSCD or OTHSCU Fund Code.
- VSID051 - There must be at least one student per institution with an STLND or STLDNU Fund Code.
- VSID052 - There must be at least one student per institution with an STSCHD or STSCHU Fund Code.



# Updated Data Element/Validation Rule

## Updated Data Element

- Fund Code (FNA003)

## Updated Validation Rule

- VSID036 – There must be at least one student per institution with a DIRECT Fund Code.



# New/Updated Reports

## New mimic tables

- ODS\_FADM\_STU\_COA\_DETAIL\_MIMIC
- PDC\_FADM\_STU\_COA\_DETAIL\_MIMIC

## Updated mimic tables

- FADC\_STUDENT\_SUMMARY\_MIMIC
- PDC\_FADM\_STU\_SUMMARY\_MIMIC

## New persisted data report

- PDC\_FADM\_STU\_COA\_DETAIL\_MIMIC

# New/Updated Reports

## New data submission reports

- Trend Report – Institutional Funds

USG Data Store  
**Data Collection Review**  
**Institutional Funds Two Year Comparison**

Institution		Total number of funds			Total number of fund codes with \$ amount > 0			Total \$ Amount			Average \$ Amount		
		17/18	16/17	Percent	17/18	16/17	Percent	17/18	16/17	Percent	17/18	16/17	Percent
Abraham Baldwin Agricultural College	Total Institutional Funds Accepted	17,095	14,132	20.97%	10,284	8,321	23.59%	14,563,004	11,843,307	22.96%	1,416	1,423	-0.51%
	Total Institutional Funds Awarded	17,095	14,132	20.97%	13,533	11,263	20.15%	21,012,804	17,658,224	19.00%	1,553	1,568	-0.96%
	Total Institutional Funds Paid	17,095	14,132	20.97%	9,755	7,710	26.52%	12,935,842	10,682,379	21.10%	1,326	1,386	-4.29%
Albany State University	Total Institutional Funds Accepted	43,252	0		33,676	0		72,802,789	0		2,162		
	Total Institutional Funds Awarded	43,252	0		35,213	0		76,432,665	0		2,171		
	Total Institutional Funds Paid	43,252	0		32,254	0		65,470,986	0		2,030		

# New/Updated Reports

## New data submission reports

- Table Dump – Student Cost of Attendance Component Detail (ODS\_FADM\_STU\_COA\_DETAIL\_MIMIC)

USG Data Store

### Data Collection Review

#### Table Dump - Cost of Attendance Detail

SETID	STU_INST_UID	STUDENT_INST_ID	AWARD_YEAR	BUDGET_TYPE_CODE	BUDGET_COMP_CODE	BUDGET_COMP_DESC	BUDGET_COMP_AMOUNT
98200	130014	900109995	1516	CAMP	R+B	Housing and Meals	5,780
98200	130014	900109995	1516	CAMP	T+F	Tuition	3,844
98200	130014	900109995	1516	CAMP	TRAN	Transportation	2,090
98200	130014	900109995	1516	CAMP	MISC	Miscellaneous	2,120
98200	130029	900110010	1516	CAMP	B+S	Books and Supplies	1,330
98200	130029	900110010	1516	CAMP	FEES	Fees	1,804
98200	130029	900110010	1516	CAMP	R+B	Housing and Meals	12,300
98200	130029	900110010	1516	CAMP	T+F	Tuition	3,844
98200	130029	900110010	1516	CAMP	TRAN	Transportation	2,090
98200	130029	900110010	1516	CAMP	MISC	Miscellaneous	2,120

# New/Updated Reports

## Updated data submission reports

- Trend Report – Student Funds

Summary HOPE/PELL/ZELL

USG Data Store  
**Data Collection Review**  
**Institutional Funds Two Year Comparison**

HOPEZELLIPELL: \* HOPE

Institution		Total number of funds			Total number of fund codes with \$ amount > 0			Total \$ Amount			Average \$ Amount		
		17/18	16/17	Percent	17/18	16/17	Percent	17/18	16/17	Percent	17/18	16/17	Percent
Abraham Baldwin Agricultural College	Total Institutional Funds Accepted	2,460	2,589	-5.24%	2,298	2,421	-5.35%	3,049,050	3,174,028	-4.10%	1,327	1,311	1.19%
	Total Institutional Funds Awarded	2,460	2,589	-5.24%	2,298	2,421	-5.35%	3,049,050	3,174,028	-4.10%	1,327	1,311	1.19%
	Total Institutional Funds Paid	2,460	2,589	-5.24%	2,096	2,244	-7.06%	2,338,256	2,419,890	-3.49%	1,116	1,078	3.33%
Albany State University	Total Institutional Funds Accepted	2,639	0	100.00%	2,197	0	100.00%	3,706,920	0	100.00%	1,687		
	Total Institutional Funds Awarded	2,639	0	100.00%	2,197	0	100.00%	3,706,920	0	100.00%	1,687		
	Total Institutional Funds Paid	2,639	0	100.00%	2,162	0	100.00%	3,135,970	0	100.00%	1,450		

# New/Updated Reports

## Updated data submission reports

- Institution Summary by Award Year

SETID: 98200				
<b>Summary Table Metrics : 1516</b>				
	Total number of students	Total number of students with \$ amount > 0	Total \$ amount	Average \$ amount
Student Financial Need	9,196	7,957	\$158,826,108.00	\$19,960.55
Expected Family Contribution	9,196	5,520	\$59,874,748.00	\$10,846.87
Aggr Subs Outstanding Loans	9,196	3,849	\$31,846,584.00	\$8,273.99
Aggr Unsubs Outstanding Loans	9,196	3,179	\$28,804,377.00	\$9,060.83
Student Or Parent AGI	9,196	8,852	\$475,583,239.00	\$53,726.08

<b>Student Funds Summary</b>			
Total Regents Funds Awarded	Total Regents Fund Accepted	Total Regents Funds Paid	Total number of students awarded Regents funds
142,445,416	98,886,779	71,464,082	<a href="#">12,655</a>

# Data Element Dictionary Enhancements

## Change History Section

Effective Aid Years	Start: 1819 End: (None)		
Old DW Reference			
Legacy Element ID			
Change History	ACADEMIC_TERM	CHANGE_DATE	CHANGE_NOTES
	1819	Oct 8, 2019	In Aid Year 1819, this data element was created: NSLDS Pell Lifetime Eligibility Used (FNA018). This business rule was added: VFNA045.

# Data Element Dictionary Enhancements

## Valid Values Section

NSLDS Pell Lifetime Eligibility Used		FNA018						
Category	Financial Aid / Student Financial Aid / Summary / FNA018							
Description	The Pell Lifetime Eligibility Used field provides the percentage of the total Pell Grant eligibility used by the applicant.							
Data Type	N							
Length	7							
Format	N							
Collection Period	Current		Following		Annual	Monthly	Other	
	Mid-term	End of Term	Mid-term	End of Term	Y			
Valid Values								
Business Practices								



# Documentation

This release includes the following documentation:

- Test Plan

# Financial Aid Release – Aid Year 1819

## Reminder

- EDI Cross-Reference Rules (SOAXREF)
- Institutional Codes



# Financial Aid Release – Aid Year 1819 Timeframe

## Financial Aid Data Collection

### Key Dates

- October 8 , 2019 - Open
- November 4, 2019 – Certification and Due Date

## Data Collections Site

[https://www.usg.edu/georgia\\_best/application\\_development\\_and\\_support/data\\_collections](https://www.usg.edu/georgia_best/application_development_and_support/data_collections)

## During Beta Testing

- DW\_TEST@usg.edu

## During the Collection

- Helpdesk@usg.edu



# UNIVERSITY SYSTEM OF GEORGIA

---

## Information Technology Services

