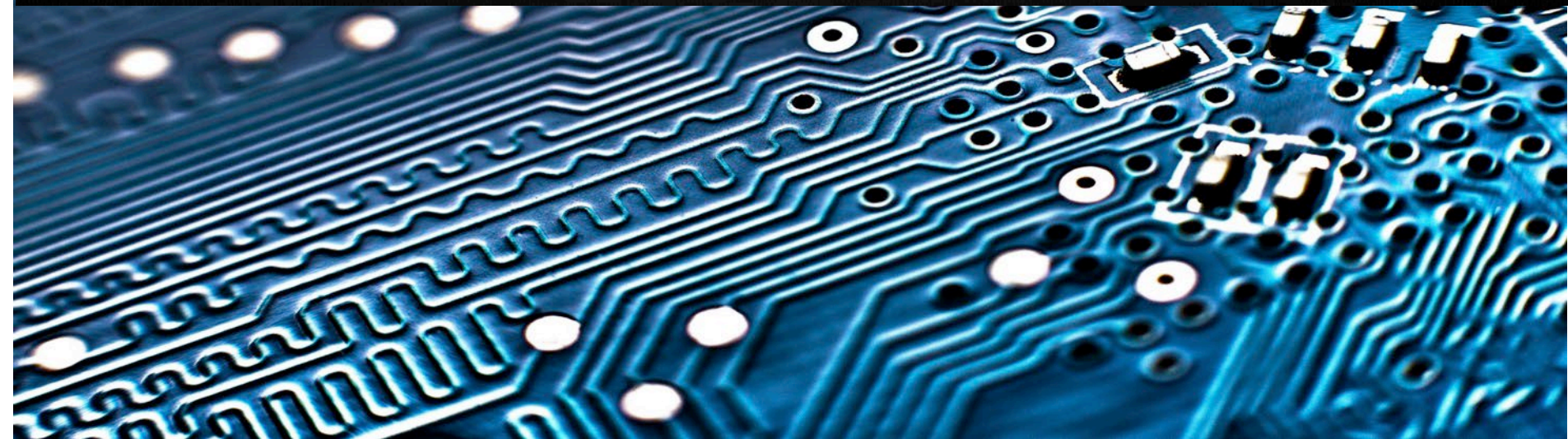


University System of Georgia Information Technology Services
Data & Reporting Services

The top right section features a light gray background with a pattern of white, stylized clouds. Below the clouds, the text "University System of Georgia Information Technology Services" is written in a small, dark blue font. Underneath that, the words "Data & Reporting Services" are displayed in a large, bold, blue font. A faint outline of the state of Georgia is visible in the background behind the text.

Academic Release Review for Spring MT 2023/4



Spring Mid-Term Collection (20234)

- Key Dates
 - **January 27, 2023 – Open for Preliminary Headcount**
 - February 7, 2023 – Collection closes for persistence of PH data
 - February 10, 2023 – Collection Re-opens
 - February 22, 2023 – Census Date
 - March 3, 2023 – Certification and Due Date

Items Included in Release

- Academic Release 1.14 **(Updated)**
 - Campus ETL
- Data Collections ETL 1.3
 - Data Collection Extraction process (ZADMETL)

Items Included in Release

- Campus ETL modification
 - Session Instruction Type Code (SES006)
- Column Resize
 - SECTION_INSTRUCTION_TYPE
 - SESESSION_INSTRUCTION_TYPE_CODE
- Data Element Dictionary (DED) Updates
 - Section Instruction Type Code (SEC008)
 - Session Instruction Type Code (SES006)

Session Instruction Type

- Campus ETL Modification
 - Data Source for Session Instruction Type Code
 - Table: STVSCHD
 - Column: STVSCHD_INSM_CODE

The screenshot shows the Banner ETL tool interface for 'Schedule Type Code Validation STVSCHD 9.3 (TDW1997)'. The table displays the following data:

Code *	Description *	Instructional Method	Automatic Scheduler	Co-op Assignment Allowed	Voice
A	Lecture	10	<input type="checkbox"/>	<input type="checkbox"/>	
B	Lecture/Supervised Lab/Clinic	11	<input type="checkbox"/>	<input type="checkbox"/>	
C	Lecture/Unsupervise Lab/Clinic	12	<input type="checkbox"/>	<input type="checkbox"/>	

The 'Code *' column for row A and the 'Instructional Method' column for row A are highlighted with red boxes. The status bar at the bottom shows 'STVSCHD.STVSCHD_INSM_CODE ...'.

(STVSCHD_INSM_CODE replaced the deprecated column STVSCHD_INSTRUCT_METHOD in a prior Banner baseline release)

Session Instruction Type

ellucian Schedule Type Code Validation STVSCHD 9.3

ADD RETRIEVE RELATED TOOLS

SCHEDULE TYPE CODE VALIDATION

Code *	Description *	Instructional Method	Automatic Scheduler	Co-op Assignment Allowed	Voice Response Message
A	Lecture	10	<input type="checkbox"/>	<input type="checkbox"/>	
B	Lecture/Supervised Lab/Clinic	11	<input type="checkbox"/>	<input type="checkbox"/>	
C	Lecture/Unsupervise Lab/Clinic	12	<input type="checkbox"/>	<input type="checkbox"/>	
D	Seminar	20	<input type="checkbox"/>	<input type="checkbox"/>	

1 of 2 10 Per Page Record 1 of 18

Activity Date 01/30/2007 12:00:00 AM

EDIT Record: 1/18 STVSCHD.STVSCHD_INSM_CODE [1] @2000 - 2022. Ellucian. All rights reserved. ellucian. SAVE

ellucian Schedule SSASECT 9.3.27 [GA 9.4.1]

ADD RETRIEVE RELATED TOOLS

Term: 202202 CRN: 20141 Subject: CHEM Course: 1152 Title: Survey of Chemistry II Start Over

Course Section Information Section Enrollment Information Meeting Times and Instructor Section Preferences Delivery Technology

Times and Instructors Scheduler Preferences

Meeting Dates Meeting Location and Credits

SCHEDULE

Automatic Scheduler	Building	Room	Schedule Type *	Hours per Week *	Override Indicator	Session Credit Hours	Partition Details	R
	0013	204	A	2.50		3.000	<input type="checkbox"/>	

1 of 1 10 Per Page Record 1 of 1

EDIT Record: 1/1 SSRMEET.SSRMEET_SCHS_CODE [1] @2000 - 2022. Ellucian. All rights reserved. ellucian. SAVE

Column Resize

Column format changed to VARCHAR2
(5 CHAR)

- Section Instruction Type Code (SEC008)
 - SECTION_INSTRUCTION_TYPE
 - ODS_ADMCRS_SECTION_MIMIC
 - PDC_ADMCRS_SECTION_MIMIC
- Session Instruction Type Code (SES006)
 - SESSION_INSTRUCTION_TYPE_CODE
 - ODS_ADMCRS_CLS_SESSION_MIMIC
 - PDC_ADMCRS_CLS_SESSION_MIMIC

Data Element Dictionary (DED)

DED Updates to correct and clarify the Data Source

- Section Instruction Type Code (SEC008)
 - Table: STVSCHD
 - Column: STVSCHD_INSM_CODE
 - GUI Name: STVSCHD / SSASECT
 - GUI Label: STVSCHD Instructional Method where STVSCHD Code = SSASECT Schedule Type
 - SOAXREF Translation Code: RGTSCHD

Data Element Dictionary (DED)

DED Updates to correct and clarify the Data Source

- Session Instruction Type Code (SES006)
 - Table: STVSCHD
 - Column: STVSCHD_INSM_CODE
 - GUI Name: STVSCHD / SSASECT
 - GUI Label: STVSCHD Instructional Method where STVSCHD Code = Schedule Type on SSASECT > Meeting Times and Instructor >Times and Instructors > Meeting Location and Credits
 - SOAXREF Translation Code: RGTSCHD

Data Collections Site

https://www.usg.edu/georgia_best/application_development_and_support/data_collections

During Beta Testing

- DW_TEST@usg.edu

During the Collection

- Helpdesk@usg.edu



UNIVERSITY SYSTEM OF GEORGIA

Information Technology Services